

# MEADFURLONG SCHOOL NEWSLETTER NO 238

Milton Keynes Council

NEWSLETTER NO 238

11th September 2009

## AUTUMN 2009

Dear Parents,

Welcome back to the new school year with a particular welcome to our children in year 3 we hope you will all enjoy your time at Meadfurlong

### Year 3

Our Year 3 pupils seem to have settled in really well with the teaching staff reporting that they are very pleased with the start that has been made in the classroom.

May I remind parents that if they have any matters that they need to discuss there are staff in school who will be more than happy to do their best to help.

In particular, the staff concerned are the learning mentors, Mr Anthony Perkins, Mrs Christine Ierides and Mrs Pauline Lampard. The role of the learning mentors is to assist the children and parents with anything that affects their life in school; usually this involves arguments and disputes between children which are more than often resolved very quickly if the mentors are informed early enough. All too often parents become concerned about their child being bullied but the school has not been informed that a child is worried. We do not accept any form of bullying in the school and make every effort to work with parents to solve any matters that involve children being unkind to each other but it is vital that the mentors are informed as soon as possible.

The other member of staff who can assist parents is Miss Trish Henson. She is available in the office area and will happily liaise with teachers when parents feel that there is a need to give their child's teacher an important piece of information. We prefer to do arrange communication with teachers in this way because teachers are busy preparing for the school day so, whilst we would want parents to feel welcome in the school, it is often difficult for teachers to give their full attention to the matter in hand at this time of day and I am sure that all parents would not want the education of their children to be affected.

In the event of a dire emergency, Miss Henson will still assist any parent to make sure that the situation is dealt with.

### School Meals

Our new school meals provider has continued with this service with each meal costing £2.05.

Parents need to remember that because these meals are brought in from kitchens which are not on our site all meals **MUST** be ordered the week before. If meals are not ordered then meals cannot be provided.

You may continue to provide your child with a packed lunch but please do not include fizzy drinks, sweets or bars of chocolate. (Chocolate covered biscuits or cakes are acceptable)



### Snacks

We recognise that the children get hungry during the morning teaching session so please provide your child with a snack if you think this is the case. Again it would be better if this is a healthy food option such as a piece of fruit or cereal bar rather than a chocolate item but it must be provided separately from your child's lunch box.

We also sell fruit at break on most mornings at only 10p per portion.

### Water Bottles

All pupils need to have a water bottle with them in school preferably one with a self sealing lid. They are able to refill their bottles as we have water cooler machines available to them.

### Birthday sweets

Traditionally at Meadfurlong children bring in sweets to share with their friends. We have no wish to stop children from bringing in sweets on their birthday but lollipops are not permitted because we are concerned that a child sucking on a lollipop will be seriously injured if they trip and fall forwards.

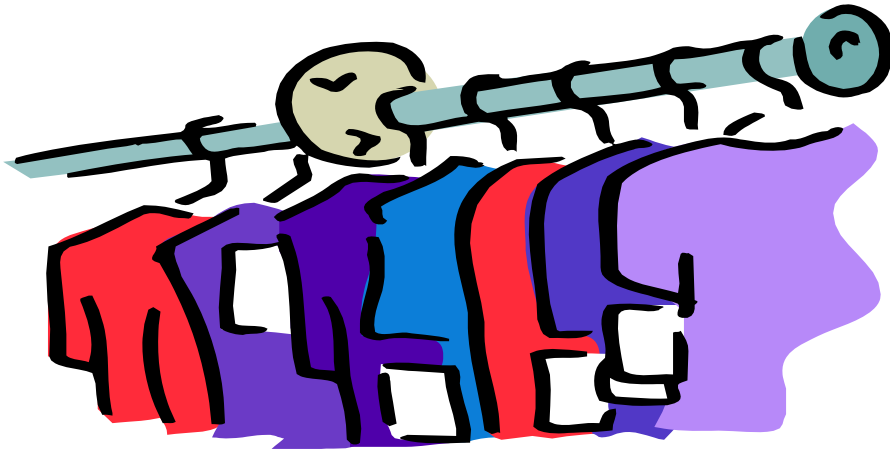
Please remember that sweets are not allowed at any other time and that chewing gum is not allowed at any time.



### Parent Mail

Just a gentle reminder about the Parent Mail letter sent out last term. Even if you do not have an e-mail address, your mobile telephone number will work just as well. Please complete the slip attached to the letter and return to school as soon as possible as we wish to start the Parent Mail service very soon.

If you have mislaid your letter or if your child is a new Y3 pupil then a new letter can be collected from the office



### **Lost Property**

I have to say that lost property is our biggest problem. At the end of last term we must have had something in the region of 150 items of clothing some of which were a large number of perfectly good coats that had hardly been worn.

Mrs Lampard has very kindly kept many of these items so I would urge parents to check with her if you know that your child has left an item in school. We do not have any storage facilities for these items so they will have to go to the charity shop at the end of September.

Once again, would parents please make an effort to name all items of clothing with a permanent marker so that we have a chance to reinstate clothing with their owners.

### **School Visits**

During the year we offer opportunities for children to visit various places to enhance their learning. If you are interested in any of these opportunities please be assured that we make every effort to keep the cost down as much as possible, particularly in these times of rapidly increasing costs. It is simply not possible for the school to offer visits out of school without parental support with the cost but the benefits to the children are enormous, therefore I would urge all parents to do their best to support any visits offered.

However, it is really important that parents make sure that they are able to complete their payments towards these visits as it causes many financial problems for the school and other parents if visits have to be cancelled at the last minute. If you encounter financial difficulties please contact the school as soon as possible so that we can arrange with you to manage the payments over a longer period if necessary.

At present there are two visits already planned. One is a residential visit for Year 4/5 to Shortenills and the other is the annual residential visit to France, both in May 2010. There are places on each of these visits so please contact the school if you would like more details.

For residential visits the costs include charges for board and lodging which will be made for all pupils except where parents receive Income Support, Family Credit, Income based job seekers allowance or Disability Working Allowance. Requests for remission of this charge should be made in writing, in confidence, to the Headteacher.

The remaining costs for residential and day visits cover all activities, transport, insurance etc and parents are invited to make a voluntary contribution towards the visit. Parents are not obliged to make a contribution and children will not be excluded through an inability or unwillingness to pay. However, the visit can only go ahead if there are sufficient voluntary contributions to cover the costs. Arrangement are always available for the costs to be paid in instalments.



## Mission Statement

Last year we rewrote our mission statement for the school so that it better reflects the changes that have occurred during the last few years. It is included below for your information.

### Mission Statement

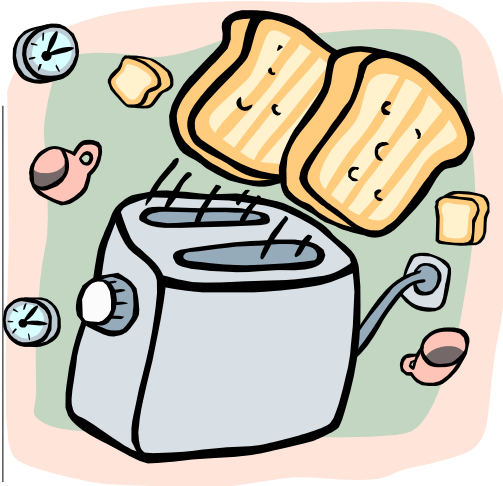
#### Meadfurlong School

*'Learning together for a successful tomorrow.'*

At Meadfurlong we aim to work in partnership with home and the community to achieve the following.

- Provide a welcoming and inclusive learning environment that is safe and caring.
- Offer exciting, challenging and creative opportunities which will allow every child to enjoy and achieve their own high level of success.
- Develop skills to become independent learners.
- Celebrate what children have achieved in every aspect of school life.
- Guide children towards taking responsibility for their next learning steps.
- Provide skilled, high quality teaching with a personalised approach to learning.
- Meet the changing needs of the children through a broad, challenging and relevant curriculum.
- Value the importance of making a positive contribution to the local community and beyond.
- Work together to purposefully monitor and evaluate standards of learning and teaching.
- Plan for continued progress by the setting of personalised and challenging targets.
- Promote respect for self and others by celebrating difference and valuing diversity.
- Encourage children to adopt healthy lifestyles and extend themselves in mind body and spirit.





### **Breakfast Club**

Parents will no doubt be aware that we operate a breakfast club each morning in the school hall starting at 8.00am.

It is just 30p per breakfast with each additional item being an extra 10p; this represents really good value for money and is the least expensive in Milton Keynes.

You do not have to register just turn up and pay the staff in charge

### **School Uniform**

Thank you to the majority of parents who have purchased school uniform from our supplier or through their own sources. May I remind all parents that in order to keep costs to a minimum we are happy for you to buy items from cheaper clothing outlets such as supermarkets if you can as long as they are in our school colours. Details of the uniform can be found on the web site or by contacting the school.

We do have a supplier who will provide uniform with a school logo.

Parents will recall that we organised a new uniform provider for this year with a new range of clothing and new logo. We originally planned for all transactions to be done directly with the supplier who would then deliver to your door. We felt that this would be a much better arrangement for all parents as it would be much more convenient.

Sadly I have to tell you that this arrangement will no longer be in operation because the supplier has been subjected to extremely offensive verbal abuse from some parents with some parents refusing to pay for goods ordered. In future we have now arranged for all orders to be placed in the school along with money to cover the cost; the school will order the items that will be delivered to the school for collection.

### **Additional Activities**

Staff at the school will be offering a variety of activities that the children can join in at lunch time and after school including sports, computers, dancing, cooking and many more. A full list of activities will be provided later in the term.

### **Expensive Items, Jewellery & Mobile Phones**

Just a reminder to all parents that it is not necessary for the children to have any expensive items of equipment. We do ask that you provide basic equipment such as pencils, colouring pencils, rubbers etc but these should not be expensive.

Jewellery is not allowed in school. Children should only have a stud in a pierced ear which children should be able to remove for PE; anything else is dangerous in school and should not be worn.

Children are not allowed to have a mobile phone in school. We do understand that some parents may wish to provide their children with a mobile phone so that they can contact them at the end of the school day; in these circumstances please contact Mrs Lynn in the school office who will make arrangements for the phone to be kept safely in the school office for collection at the end of each.



## **Swine Flu**

Whilst the panic over swine flu seems to have abated for the time being it may be that an outbreak is still possible now that the children are back at school. Please note that the latest advice is that school will remain open in the event of an outbreak

## **Fashion Clothing**

Please note that the school uniform policy is very clear and does not include the wearing of the latest trendy clothing for a normal school day. One example just recently is three quarter length trousers and leggings that are in fashion for the girls. Please do not allow your child to wear these in school.

## **Community Notice Board**

In order to give parents information about local services and facilities we have improved the notice board by the front courtyard entrance to the school. Any organisation that provides us with information will have the details pinned up in this area.

## **Lateness**

May I remind all parents that **school begins at 8:40 a.m.** Your child should be ready to enter the school at this time. 8:45 is not early enough because by this time the children should be in their class being registered by the teacher. It is a very important part of the day for the teachers and the children because it is the time used to prepare the children for the day which is an essential element of the learning experience.

Furthermore, I would like to make parents aware that the government inspect attendance and lateness figures on a regular basis and publish those schools with a poor record. This is extremely damaging to a school's reputation and one which we hope that all parents would do their best to support us with.

We look forward to working positively with all parents during this academic year.

## **Parking outside the school**

I do realise that if you choose to deliver your children to school in a vehicle dropping off and parking is an absolute nightmare. Nevertheless, I would ask that all parents take particular note of the areas that are clearly marked with yellow lines and writing which they are asked to 'keep clear'.

Both Mrs Hamnett, the Headteacher of Penwith, and myself extremely concerned that one of our children will be involved in a serious accident because of the number of vehicles using the road between the school.

If at all possible could all parents keep the road clear from parking, even behind the existing parking bays, and also from turning in the road as there have been a number of near misses already this term.



